

HyperDeck Extreme Control



HyperDeck Extreme Control adds traditional broadcast deck controls to HyperDeck Extreme 8K. It works like a traditional broadcast deck with a familiar layout. Control up to 8 decks via industry standard RS-422 control.

\$1,295

Connections

Deck Control Outputs

8 x RS-422

Reference Input

Tri-Sync or Black Burst.

Reference Output

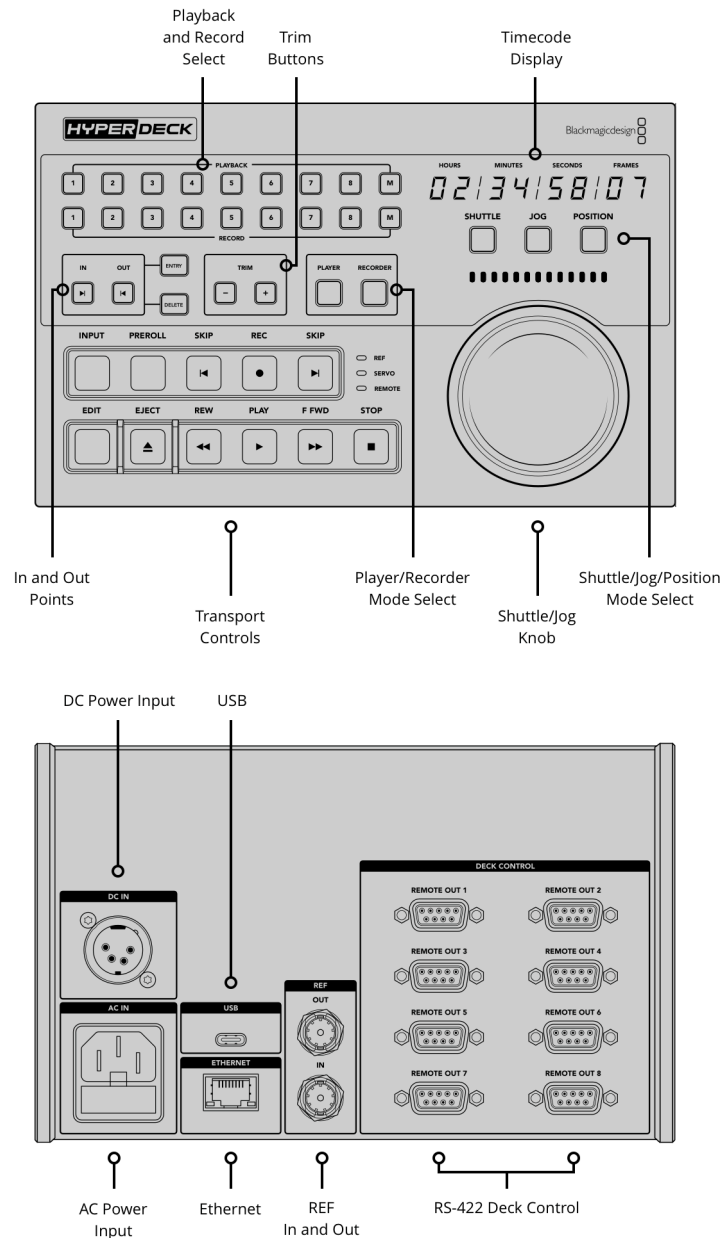
Follows reference input.

Ethernet

1Gb/s

Computer Interface

1 x USB-C for software updates.



Supported Protocols

Control Protocols

Sony

Software

Internal Software Upgrade

Loaded at system start,
or via Blackmagic HyperDeck Setup
using USB port.

Operating Systems



Mac 13.0 Ventura,
Mac 14.0 Sonoma or later.



Windows 10 and 11.

Displays

8 digit, 7 segment LED timecode
display.

Power Requirements

Power Supply

1 x Internal 100 - 240V AC.
1 x 4 pin XLR 12V DC IN for external
power or battery use.

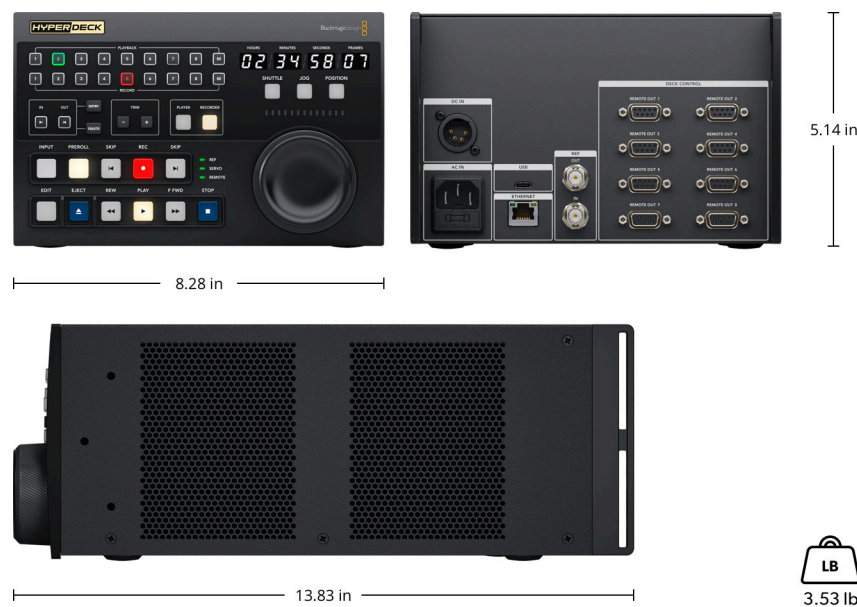
Power Usage

20W max.

Physical Installation

3 rack units height, half rack width.

Physical Specifications



Environmental Specifications

Operating Temperature
0° to 40° C (32°to 104° F)

Storage Temperature
-20° to 60° C (-4° to 140° F)

Relative Humidity
0% to 90% non-condensing

What's Included

- | | |
|---------------------------|---|
| HyperDeck Extreme Control | Welcome wallet with QR code for software download |
|---------------------------|---|

Warranty

1 Year Limited Manufacturer's Warranty.

Blackmagic Design Authorized Reseller